

KT1200 (2 x 4 Wall) / KT1300 (2 x 6 Wall) Pocket in a Box Series (Trim Included)

PARTS IN THE BOX



Hangers (2 ea)



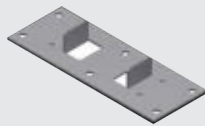
KT122
Bumber stop, nail on (1 ea)



KT155
wrench (1 ea)



KT107
Door guide (1 ea)



KT143 Floor bracket for KD
pocket door frame split jamb
(pocket in a box) (2 ea)
plus screws

**Head trim and split jamb trim included.
Flat jamb NOT included**

KT1000 (2 x 4 Wall) / KT1100 (2 x 6 Wall) Pocket in a Box Series (No trim)

PARTS IN THE BOX



Hangers (2 ea)



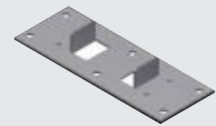
KT122
Bumber stop, nail on (1 ea)



KT155
wrench (1 ea)

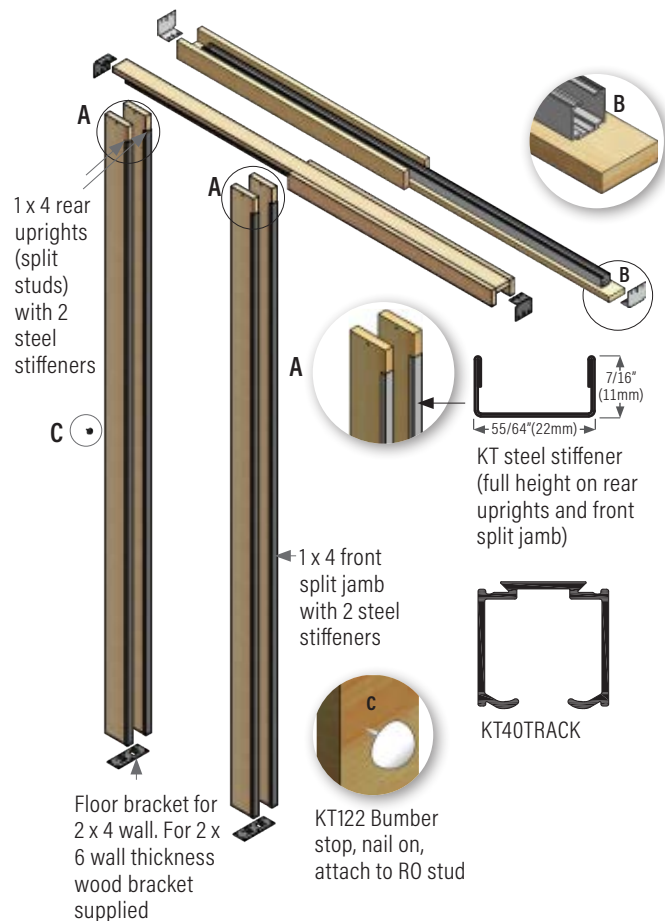
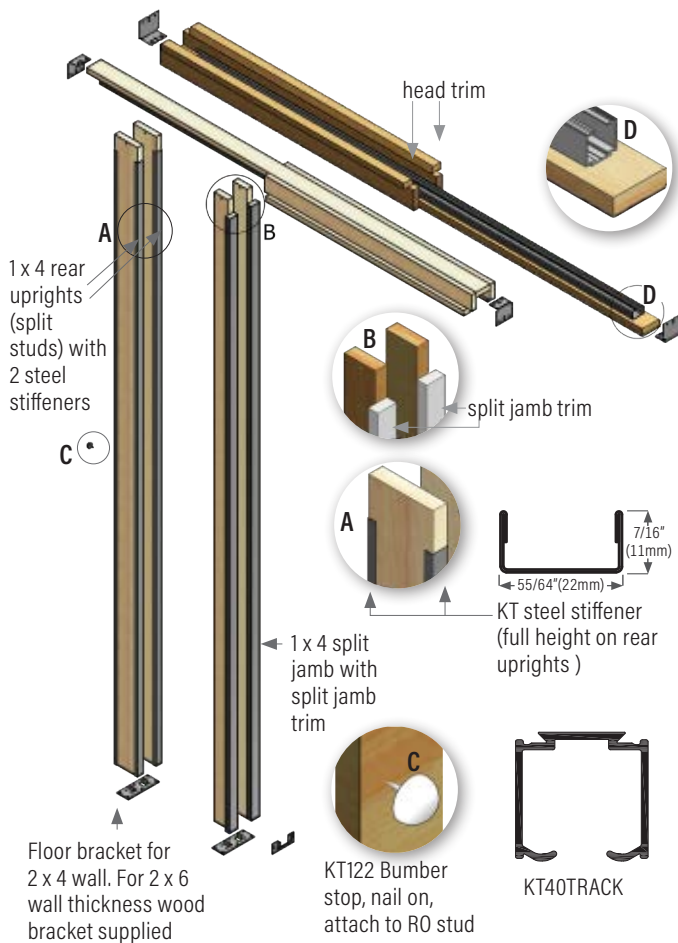


KT107
Door guide (1 ea)



KT143 Floor bracket for KD
pocket door frame split jamb
(pocket in a box) (2 ea)
plus screws

Flat jamb, head trim and split jamb trim NOT included



- 1 Rough height opening is 4-1/4" (107.95mm) more than door height. Rough opening width is twice door width plus 1" (12.7mm). See diagram 1.

DIAGRAM 1

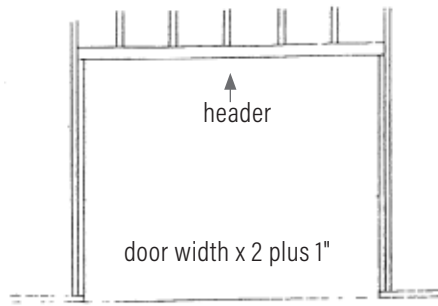
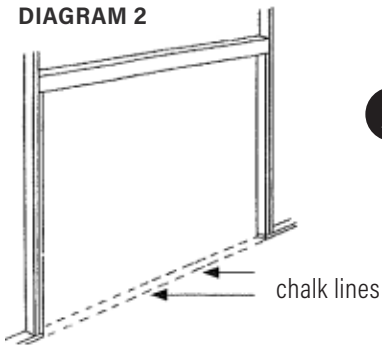


DIAGRAM 2



- 2 Snap two chalk lines on the floor evenly with the side studs as shown in diagram 2.

- 3 Attach the header by slipping it between the studs and driving a flat head nail into the slots in the end plates. Leave 1/8" (3mm) protruding. If header is not snug in opening, use the adjustable end plate to rectify. Plumb header and seat nails inside studs. Do not nail into remaining holes until the entire unit is plumb. See diagram 3.

DIAGRAM 3

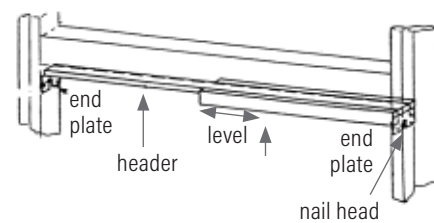
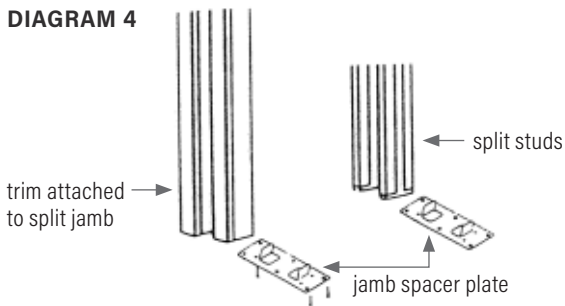


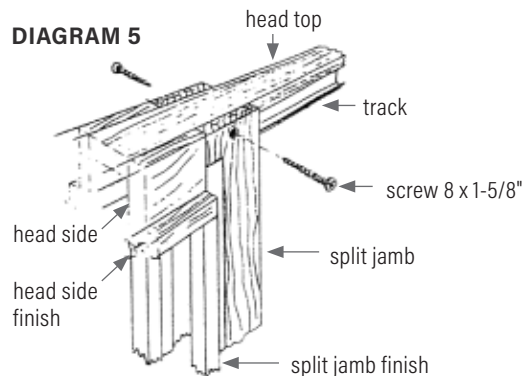
DIAGRAM 4



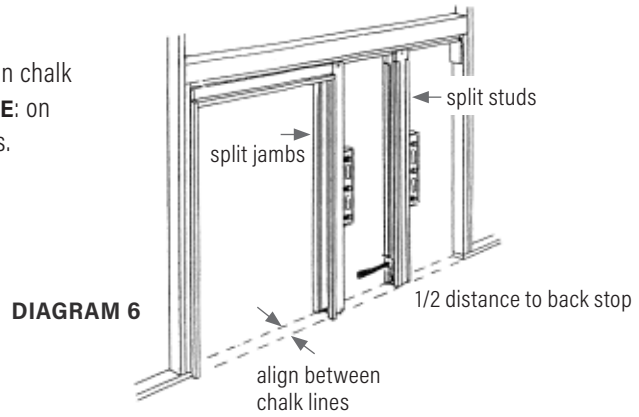
- 4 Nail the jamb spacers using spiral nails to the bottom of split studs and split jambs. See diagram 4.

- 5 Attach the split jambs to the header with screws. Screw split studs to header half the distance to back wall. See diagram 5 and 6.

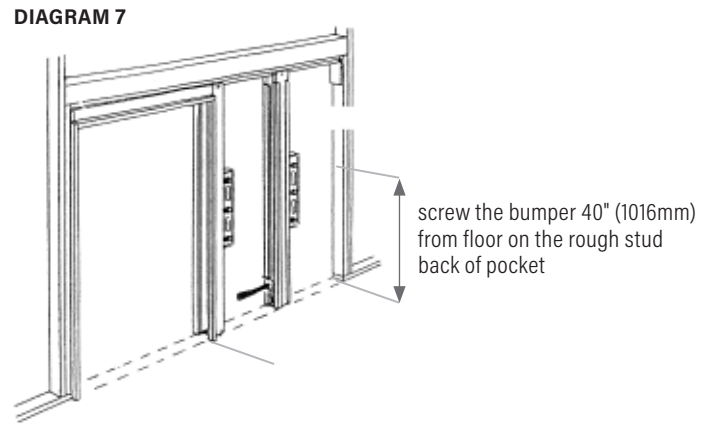
DIAGRAM 5



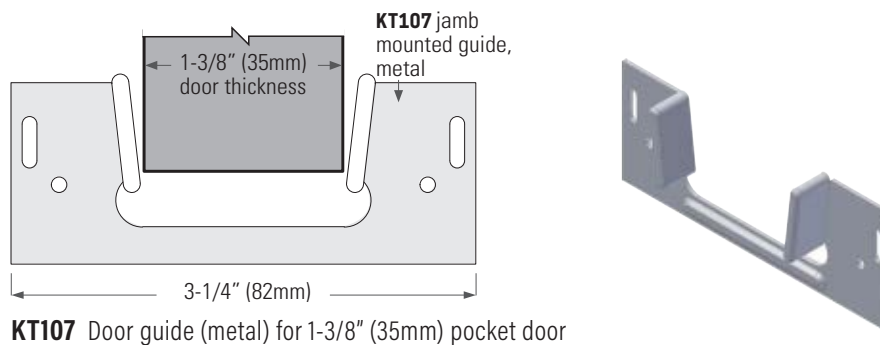
- 6** Plumb split jambs and split studs between chalk lines. Nail the jamb spacers to floor. **NOTE:** on concrete use masonry plugs and screws.



- 7** Plumb entire unit and drive nails through remaining holes in end plates.



- 8** Insert wheels into track through opening between fixed end plate and track. Follow instructions for mounting door and hardware in hardware package.
- 9** Install finished jamb on latch side after wheels are in place (supplied by other).
- 10** Mount wall covering over the pocket and above the door. Bring wall covering flush to the split jamb and head trim.
- 11** Screw guide to finished split jambs so door is held in center of pocket without binding.



Pocket Door Installation Instructions - Follow after frame installation is complete.

NOTE: To help prevent warpage, seal all edges of the door with paint or sealing stain.

1. **Install hangers:** Place hangers (wheels first) into the track through space between the track and the flat jamb.
2. **Install hanger brackets:** Mount the hanger brackets to the top of the door (with screws provided), 2-11/16" (68mm) from edge of door to center of bracket.
3. **Install and adjust doors:** Attach bracket to hanger by lifting door and inserting the hanger bracket between the upper spring and lower adjusting nut of the hangers. Align doors by turning adjusting bolt with wrench.
4. **Install floor guide:** Nail the KT107 guide to the bottom of the split jambs, centering the door in the pocket.
5. **Install finishing mouldings / stops (optional):** 5 ea 1-1/4" (31.75mm) x 84" (2134mm): After door installation, attach finishing stops to split jamb, flat jamb and header to cover gaps around the doorway.

One Track, Three Hanger Choices:



KT1035PDKIT: for 1 door application: (Hardware kit included with frame)

KT35HANGER (2 ea) hangers, KT107 (1 ea) jamb mounted guide, KT143 floor brackets (2 ea), KT122 nail on bumper stop (1 ea), KT155 (1 ea) wrench, installation sheet plus all screws. For biparting pocket doors two KT1035PDKIT required and two KT125 intrack door stops required.

Residential, max door weight: 100 lbs. (45 kg) = 2 hangers



KT1038PDKIT for 1 door application: (Hardware kit included with frame)

KT38HANGER (2 ea) hangers, KT107 (1 ea) jamb mounted guide, KT143 floor brackets (2 ea), KT122 nail on bumper stop (1 ea), KT155 (1 ea) wrench, installation sheet plus all screws. For biparting pocket doors two KT1038PDKIT required and two KT125 intrack door stops required.

Residential, max door weight: 132 lbs. (60 kg) = 2 hangers



KT1040PDKIT for 1 door application: (Hardware kit included with frame)

KT40HANGER (2 ea) hangers, KT107 (1 ea) jamb mounted guide, KT143 floor brackets (2 ea), KT122 nail on bumper stop (1 ea), KT155 (1 ea) wrench, installation sheet plus all screws. For biparting pocket doors two KT1040PDKIT required and two KT125 intrack door stops required.

Commercial, max door weight: 220 lbs. (100 kg) = 2 hangers

Head Office: Vancouver, Canada | Branch Offices & Manufacturing Centres: Toronto, Canada & Los Angeles, USA

Contact: www.DraftSeal.com | info@DraftSeal.com
