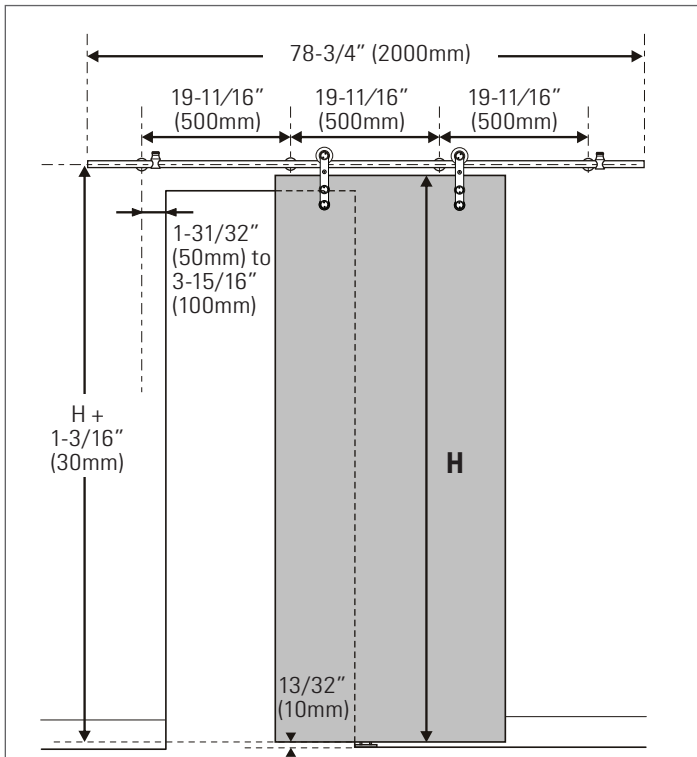




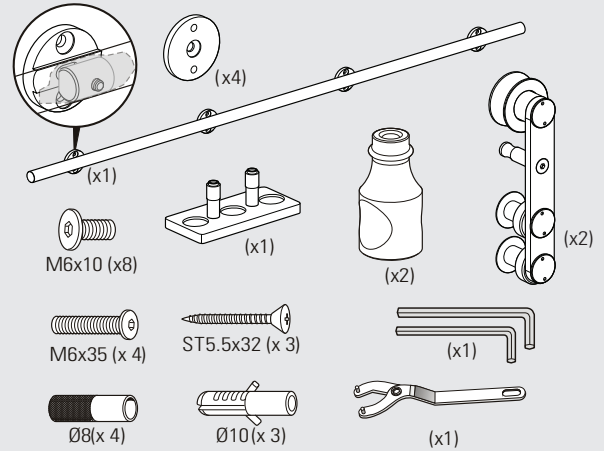
**INSTALLATION INSTRUCTIONS**

**FOR KTA2SSBL78FMKIT OR KTA2SS78FMKIT**  
 Maximum weight per panel: 210 lbs (95 kg)

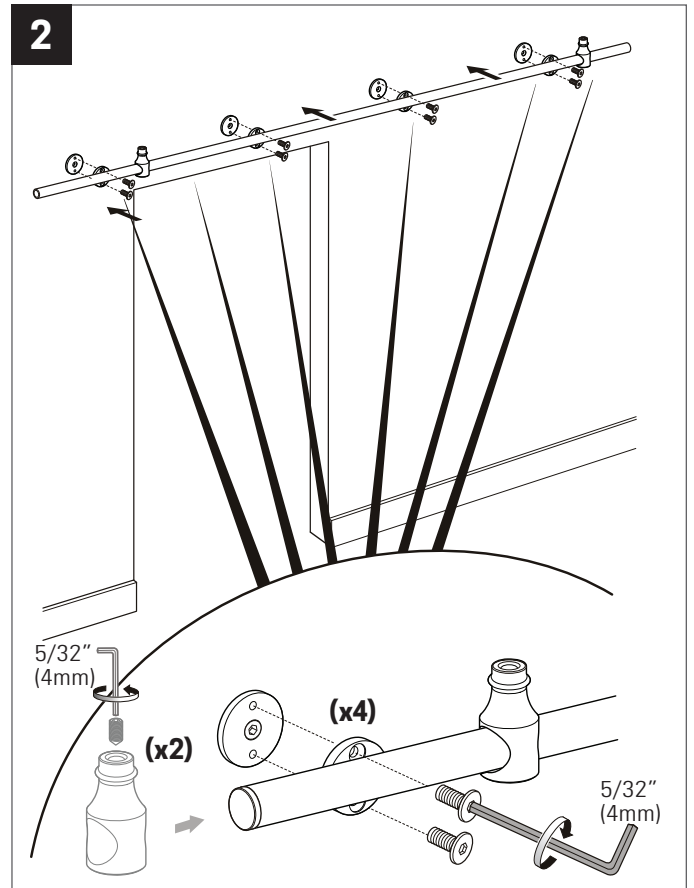
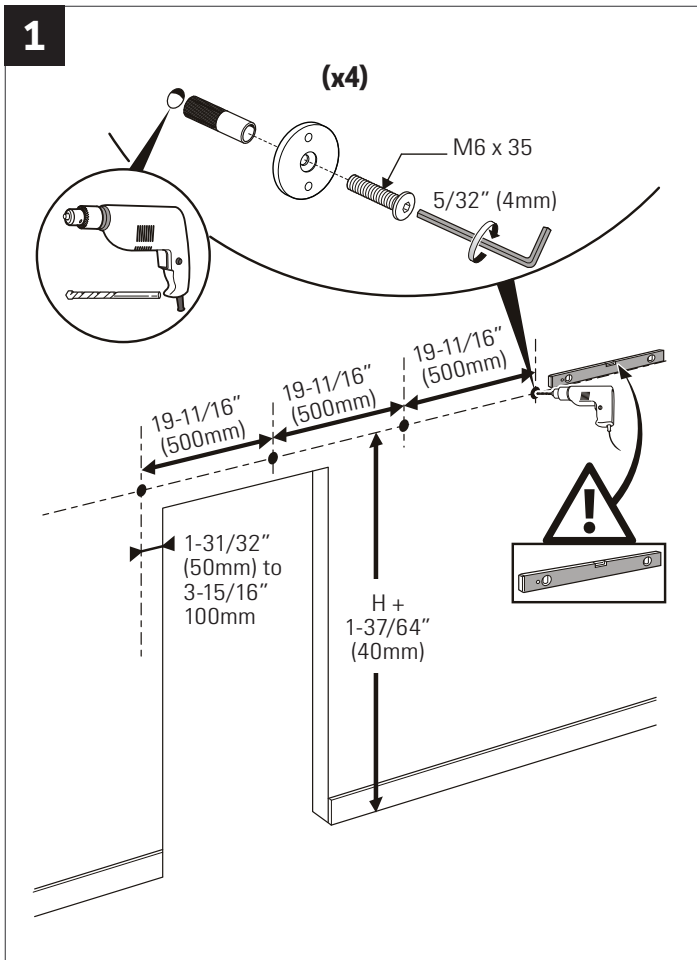
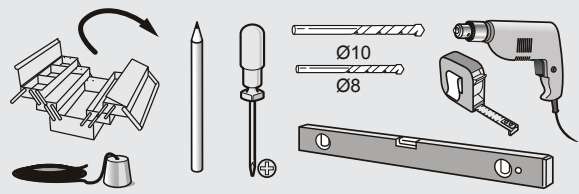
**KrisTrack® A2 Series: Round rail 78" (2000mm) & Facemount Hangers for Wood Doors**

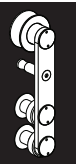


**PARTS IN THE BOX**

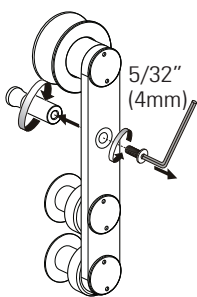


**RECOMMENDED TOOLS**





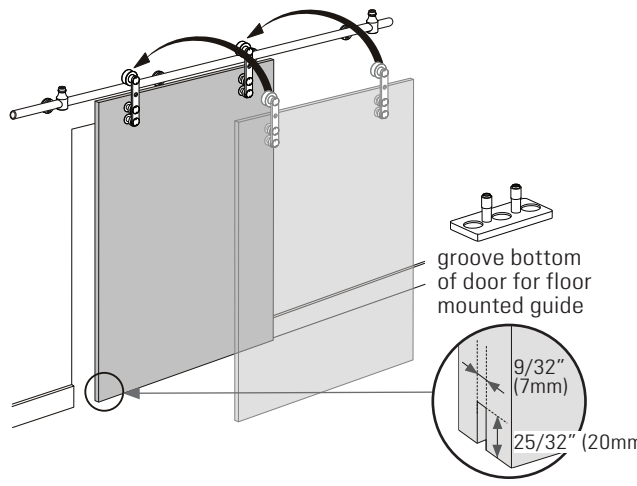
**KrisTrack® A2 Series: Round rail 78" (2000mm) & Facemount Hangers for Wood Doors**

**3** 

**2** 1-3/8" (35mm) thickness  
 hole diameter 5/8" (16mm)  
 1-25/32" (45mm)  
 2-5/32" (55mm)  
 3" (76mm) to 5-19/32" (150mm)\*  
 (x2)


**1** 1-3/4" (45mm) thickness  
 hole diameter 5/8" (16mm)  
 1-25/32" (45mm)  
 2-5/32" (55mm)  
 3" (76mm) to 5-19/32" (150mm)\*  
 (x2)

\* Guideline measurement for all wood panel.  
 For full lite glass door panel, mount hanger middle of door stile. (see drawing below)

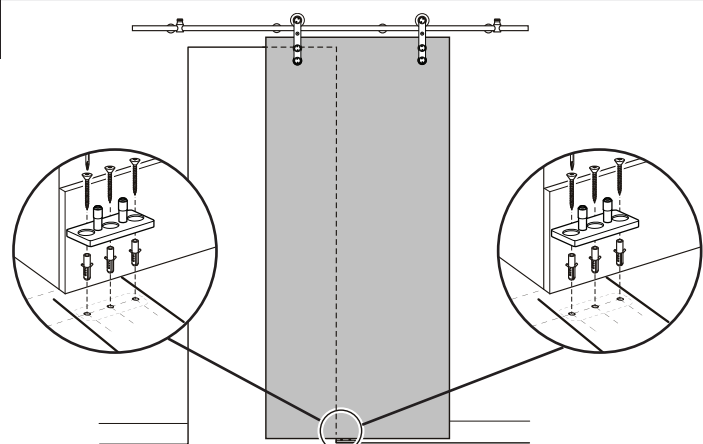


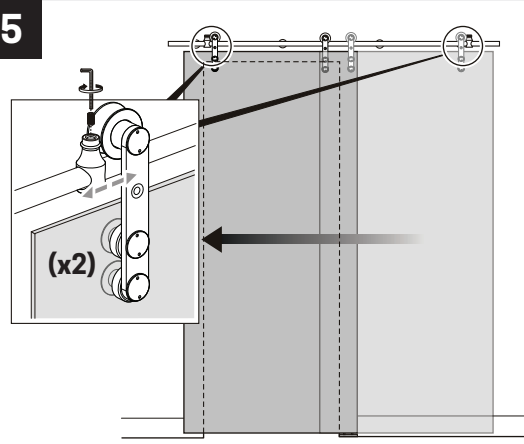
groove bottom of door for floor mounted guide

9/32" (7mm)  
 25/32" (20mm)

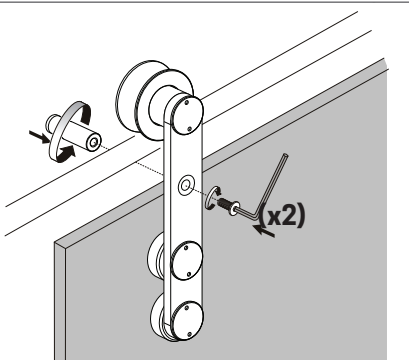


KT116 Optional jamb mounted guide

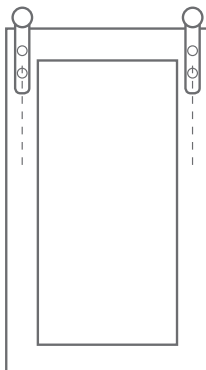
**4** 

**5** 

(x2)

**6** 

(x2)



Mount hanger middle of door stile

ALL DRAWINGS NO SCALE

**Head Office & Manufacturing Centre - Vancouver, Canada**

7470 Buller Avenue, Burnaby, B.C. V5J 4S5 Canada • info@theDSgroup.com

Ph: (604) 451-1080 • Fax: (604) 451-1140 • Outside Vancouver, BC use toll free numbers Ph: 1-888-520-9009 Fax: 1-800-567-2887

**Branch Offices & Manufacturing Centres | Eclipse Architectural® Corporate Showrooms**

Toronto, Canada & Los Angeles, USA

Vancouver & Toronto, Canada • Los Angeles, California, USA

THE DS GROUP IS THE BRAND IMAGE OF A.K. DRAFT SEAL LTD.