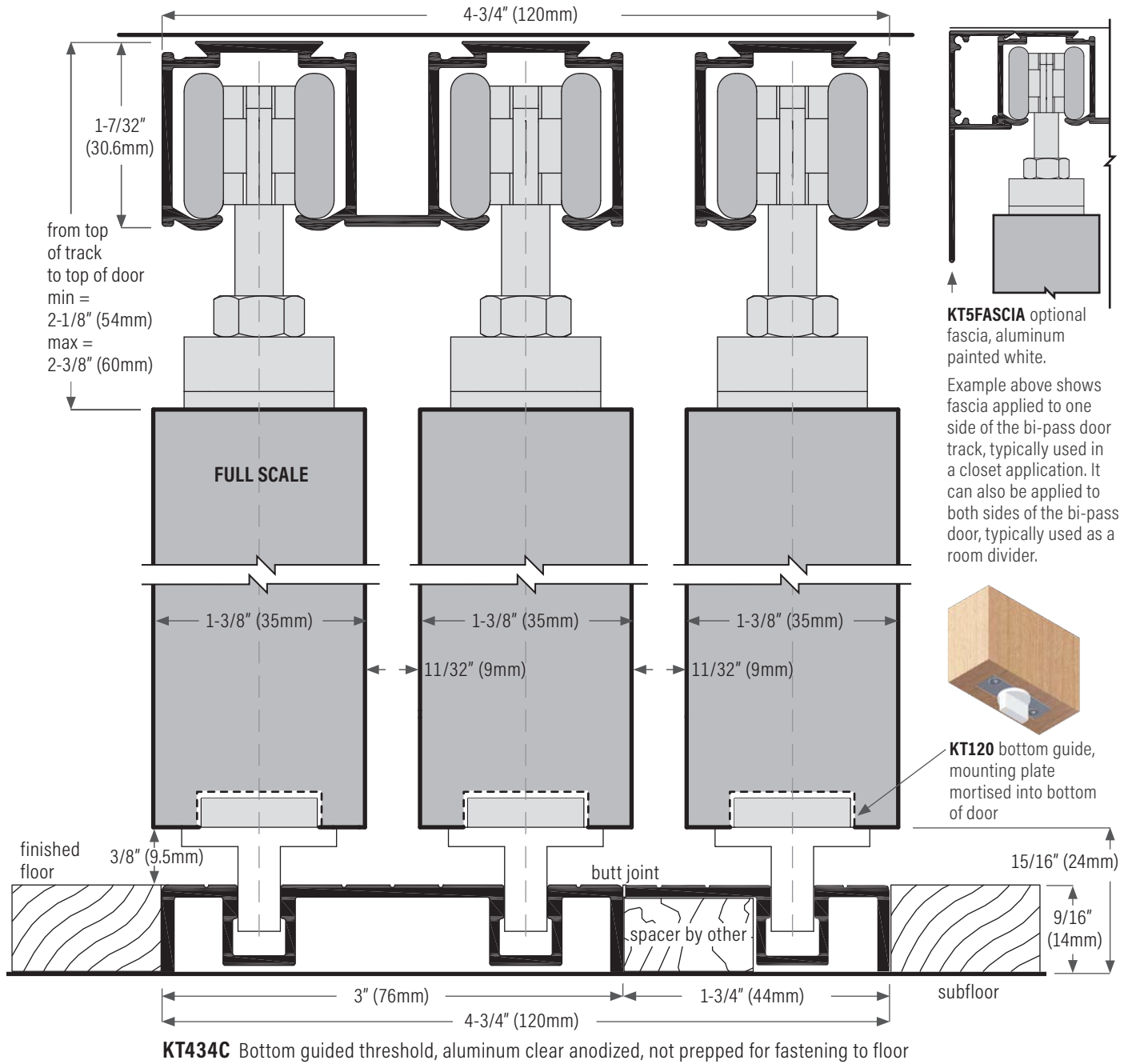
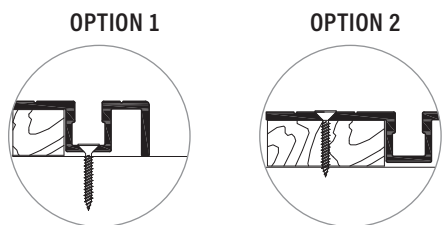


Thresholds for Bottom Guiding

Application example below shows bottom guiding threshold installed on subfloor with tile, hardwood or carpet adjacent to one or both sides.



Threshold supplied not drilled for fastening

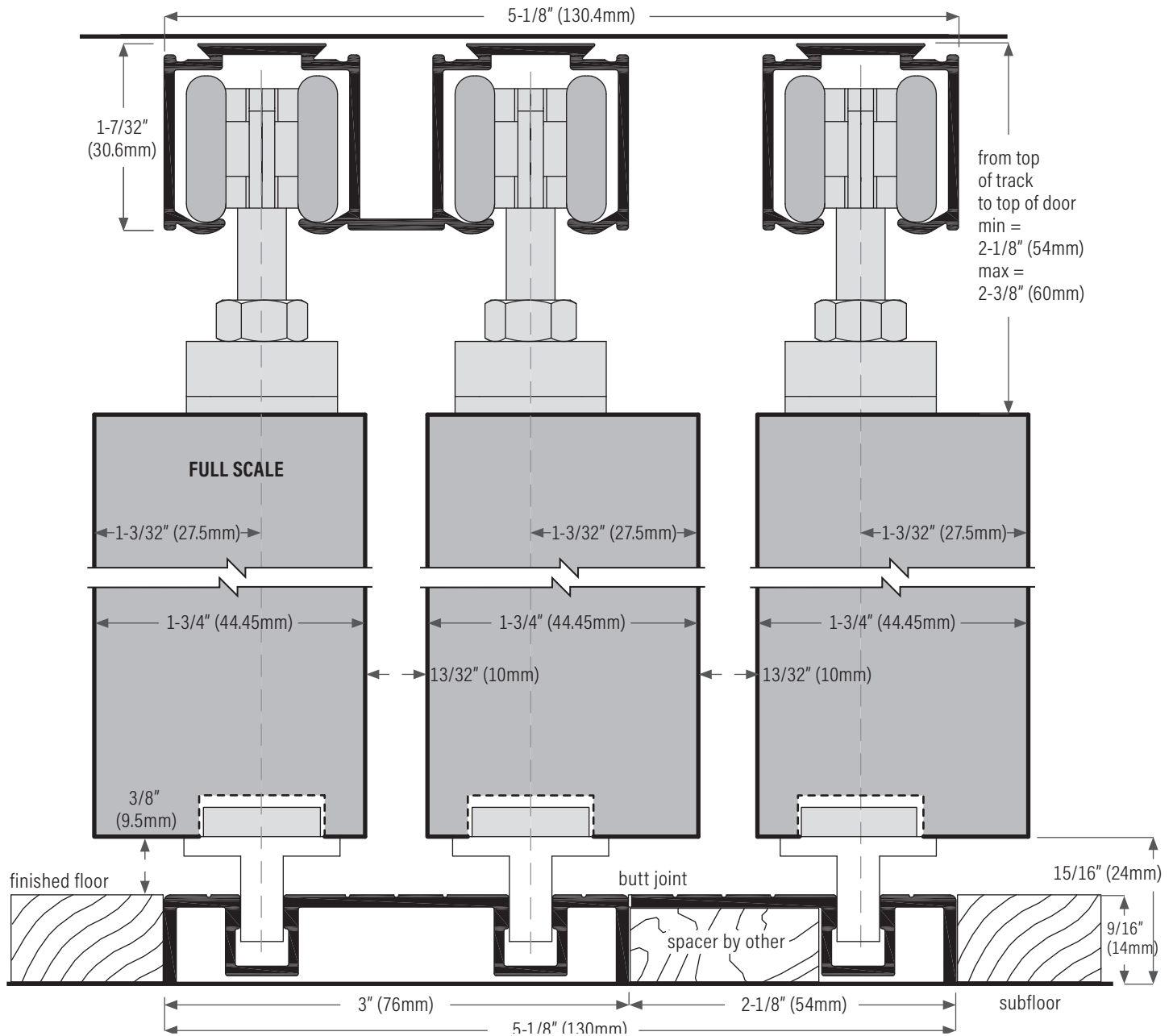


Optional Bottom Guides



Thresholds for Bottom Guiding

Application example below shows bottom guiding threshold surface mounted on finished floor

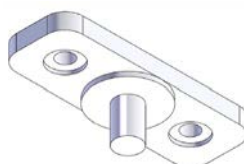


KT434C Bottom guided threshold, aluminum clear anodized, not prepped for fastening to floor

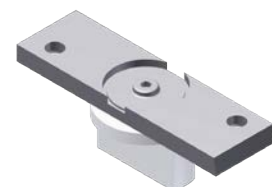
Optional Bottom Guides



KT114 Bottom guide (plastic), spring loaded



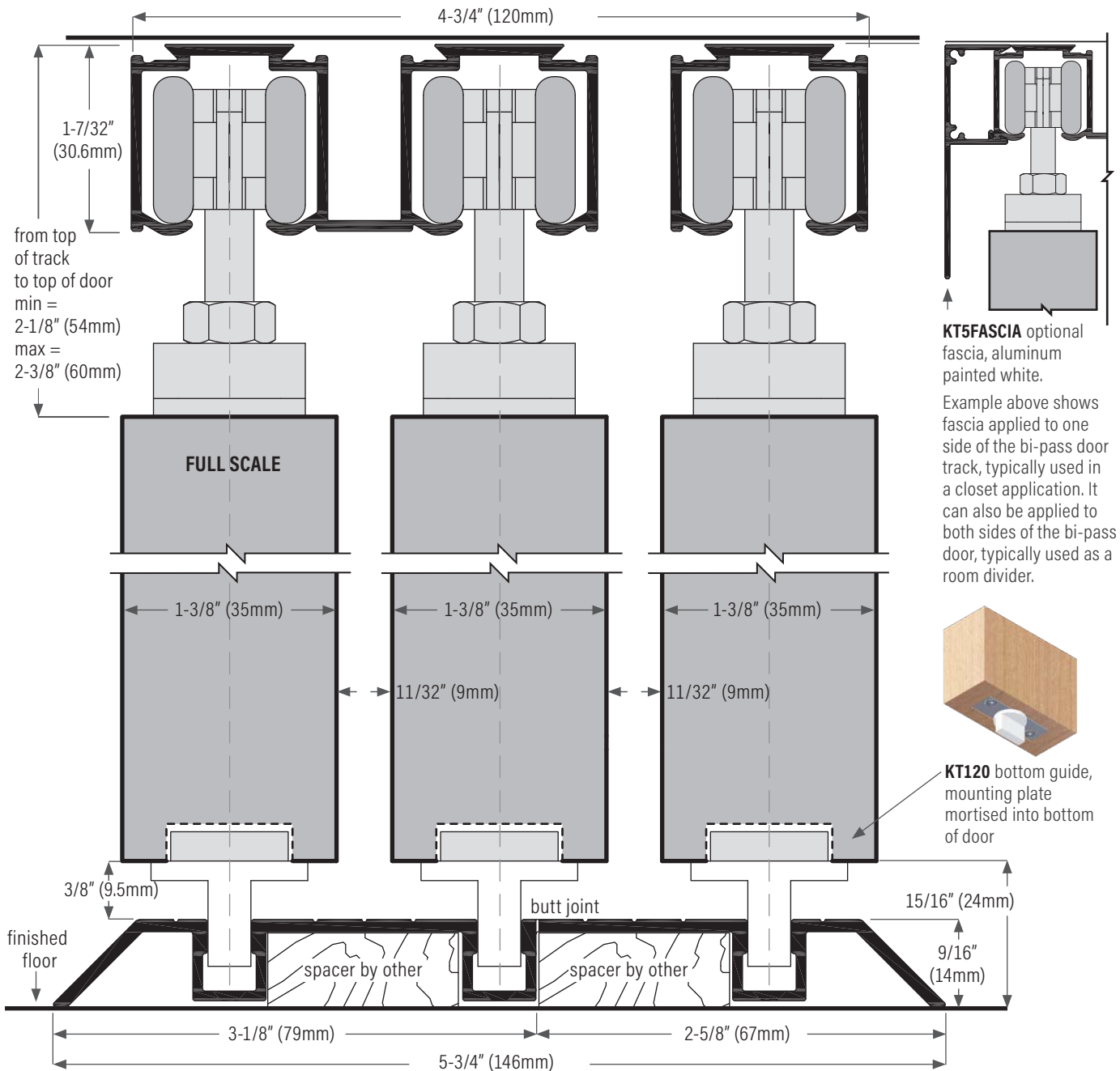
KT119 Bottom guide (plastic) for floor channel



KT120 Bottom guide (metal and plastic) for floor channel

Thresholds for Bottom Guiding

Application example below shows bottom guiding threshold surface mounted on finished floor



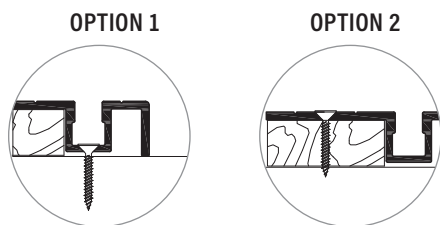
KT5FASCIA optional fascia, aluminum painted white. Example above shows fascia applied to one side of the bi-pass door track, typically used in a closet application. It can also be applied to both sides of the bi-pass door, typically used as a room divider.



KT120 bottom guide, mounting plate mortised into bottom of door

KT534C Bottom guided threshold, aluminum clear anodized

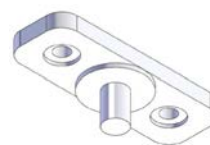
Threshold supplied not drilled for fastening



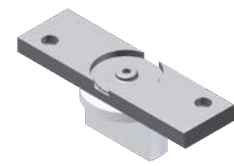
Optional Bottom Guides



KT114 Bottom guide (plastic), spring loaded



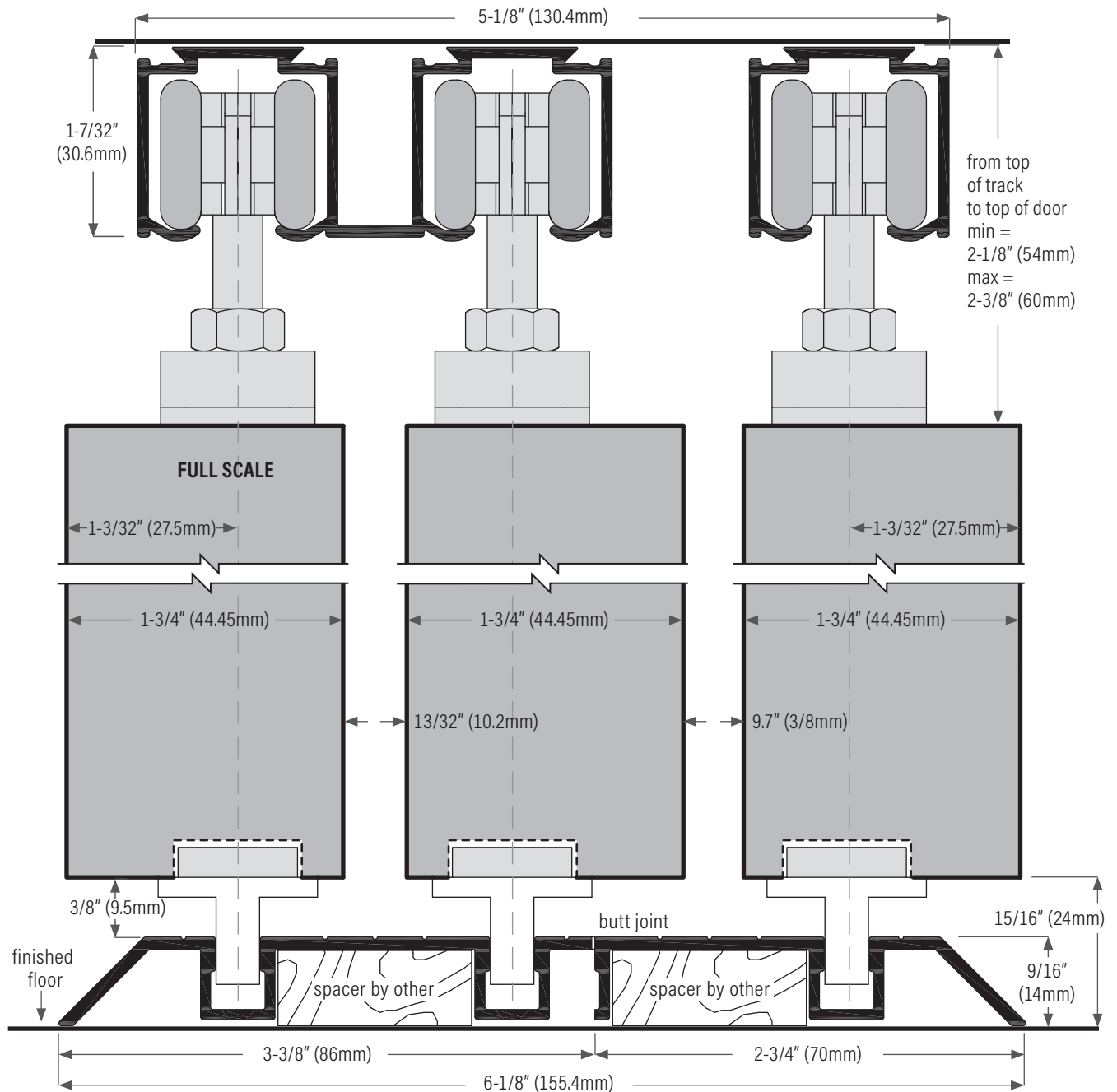
KT119 Bottom guide (plastic) for floor channel



KT120 Bottom guide (metal and plastic) for floor channel

Thresholds for Bottom Guiding

Application example below shows bottom guiding threshold surface mounted on finished floor

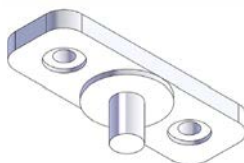


KT534C Bottom guided threshold, aluminum clear anodized

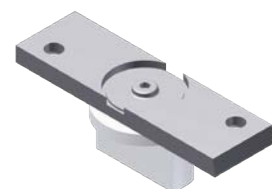
Optional Bottom Guides



KT114 Bottom guide (plastic), spring loaded



KT119 Bottom guide (plastic) for floor channel



KT120 Bottom guide (metal and plastic) for floor channel