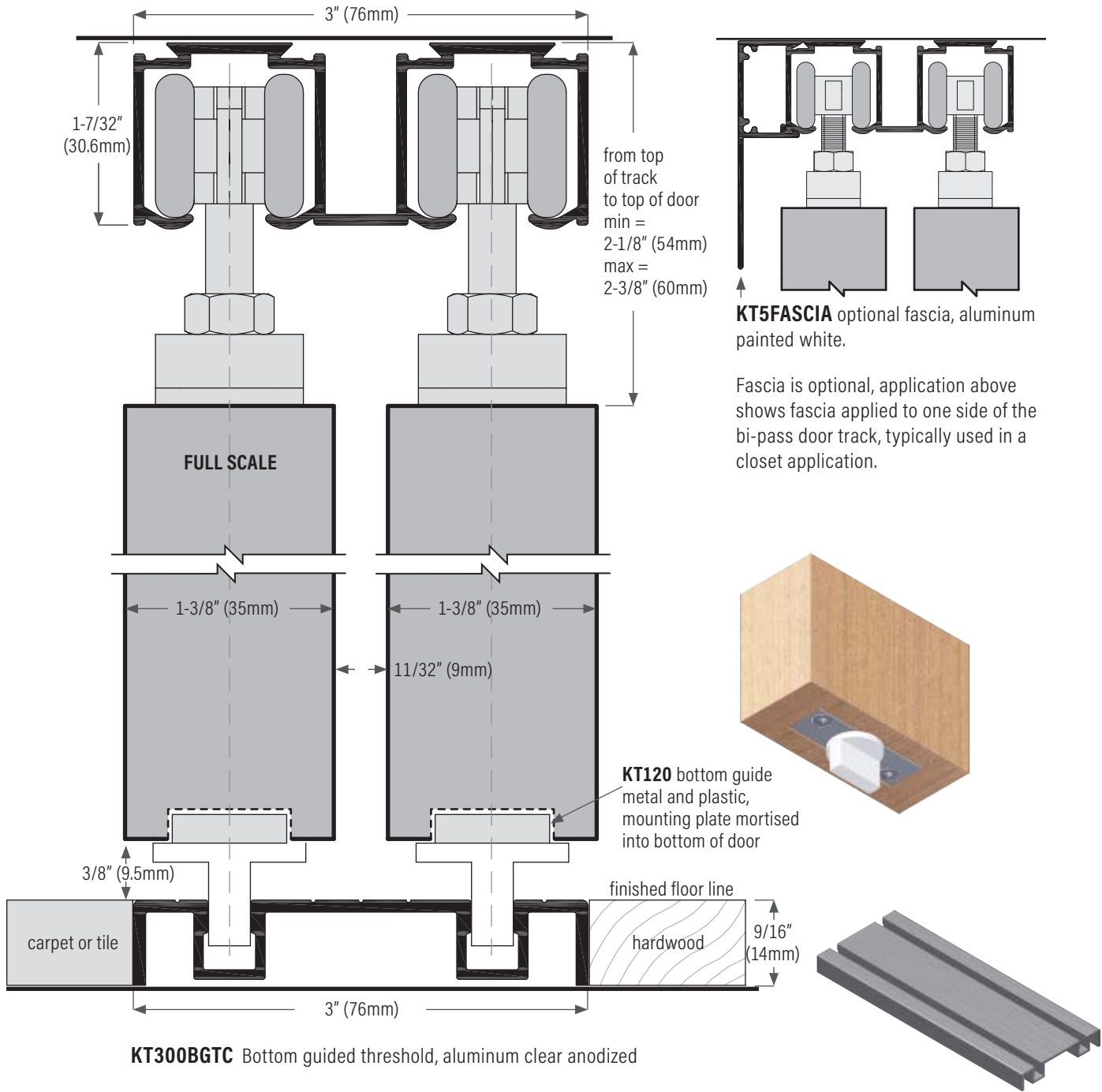


Thresholds for Bottom Guiding

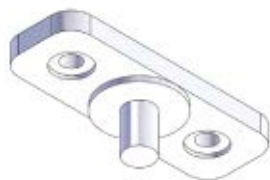
Application example below shows bottom guiding threshold installed on subfloor with tile, hardwood or carpet adjacent to one or both sides.



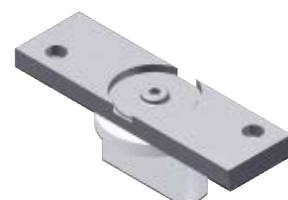
Optional Bottom Guides



KT114 Bottom guide (plastic), spring loaded



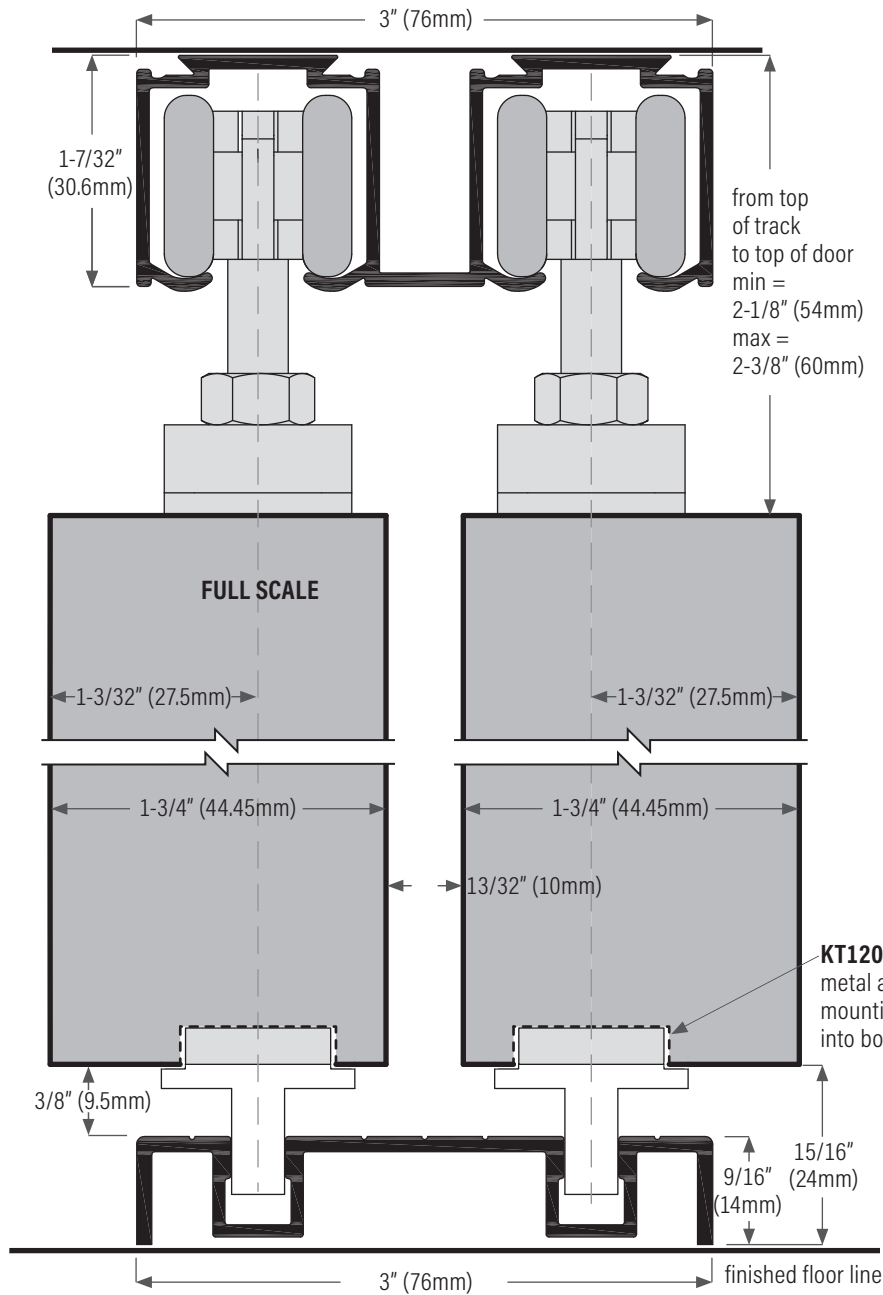
KT119 Bottom guide (plastic) for floor channel



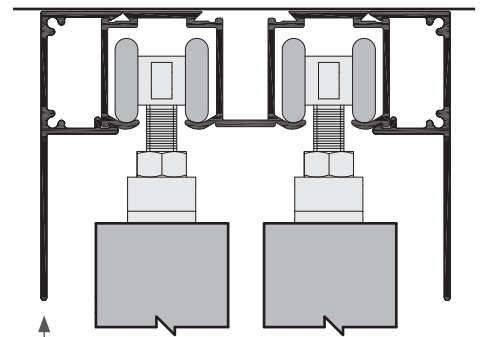
KT120 Bottom guide (metal and plastic) for floor channel

Thresholds for Bottom Guiding

Application example below shows bottom guiding threshold surface mounted on finished floor

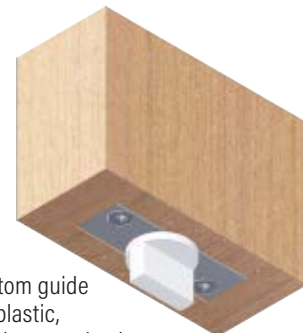


KT300BGTC Bottom guided threshold, aluminum clear anodized



KT5FASCIA optional fascia, aluminum painted white.

Fascia is optional, application above shows fascia applied to both sides of the bi-pass door track, typically used as a room divider.

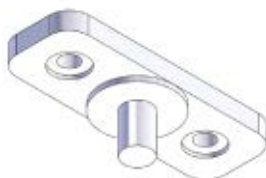


KT120 bottom guide metal and plastic, mounting plate mortised into bottom of door

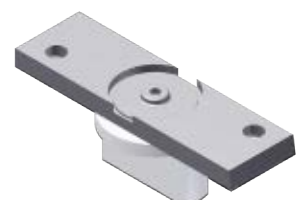
Optional Bottom Guides



KT114 Bottom guide (plastic), spring loaded



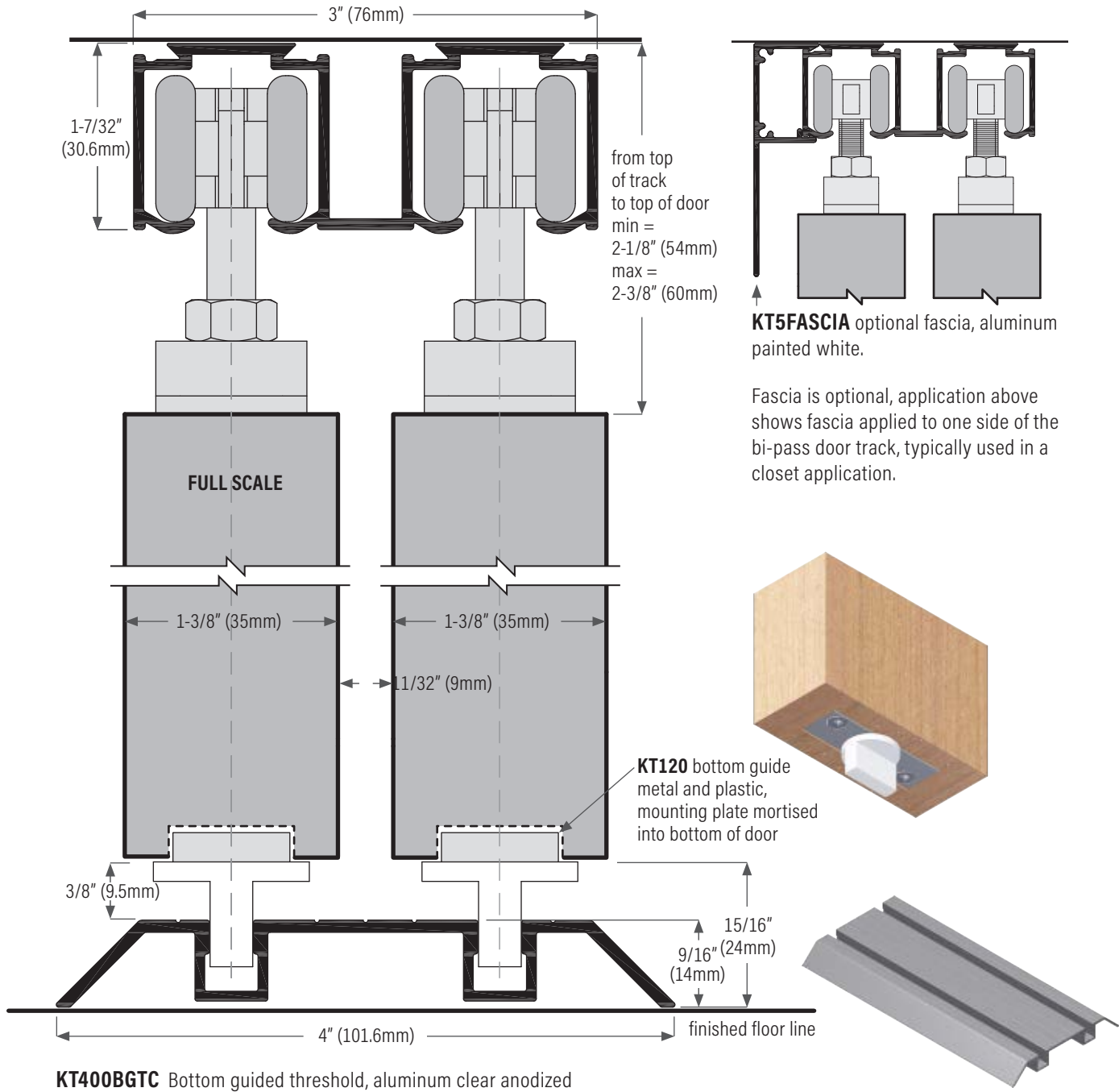
KT119 Bottom guide (plastic) for floor channel



KT120 Bottom guide (metal and plastic) for floor channel

Thresholds for Bottom Guiding

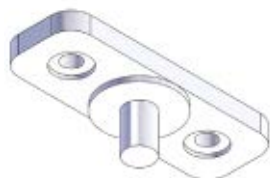
Application example below shows bottom guiding threshold surface mounted on finished floor



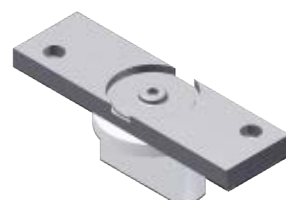
Optional Bottom Guides



KT114 Bottom guide (plastic), spring loaded



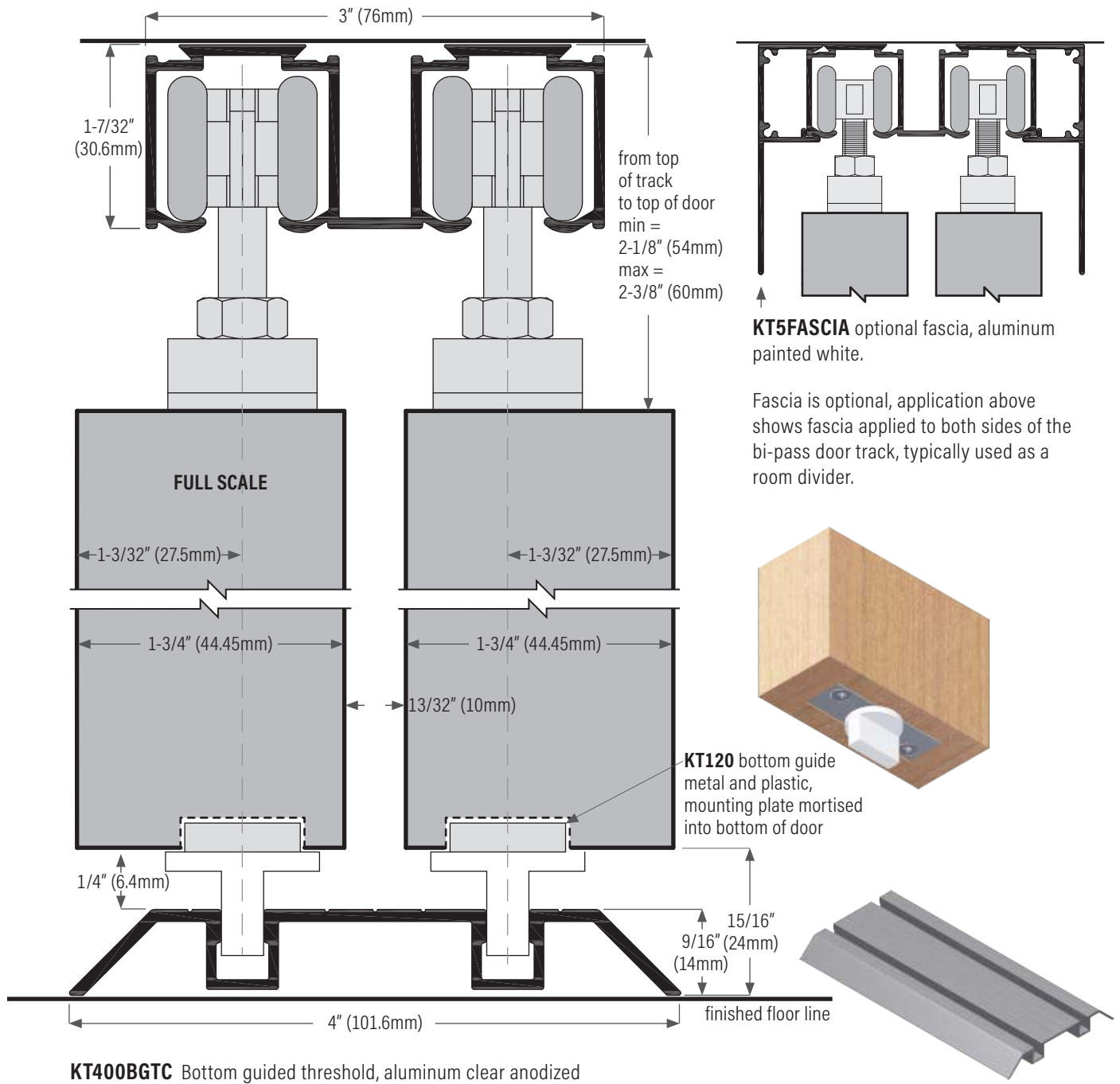
KT119 Bottom guide (plastic) for floor channel



KT120 Bottom guide (metal and plastic) for floor channel

Thresholds for Bottom Guiding

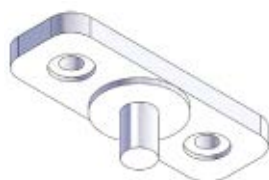
Application example below shows bottom guiding threshold surface mounted on finished floor



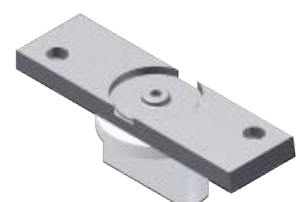
Optional Bottom Guides



KT114 Bottom guide (plastic), spring loaded



KT119 Bottom guide (plastic) for floor channel



KT120 Bottom guide (metal and plastic) for floor channel