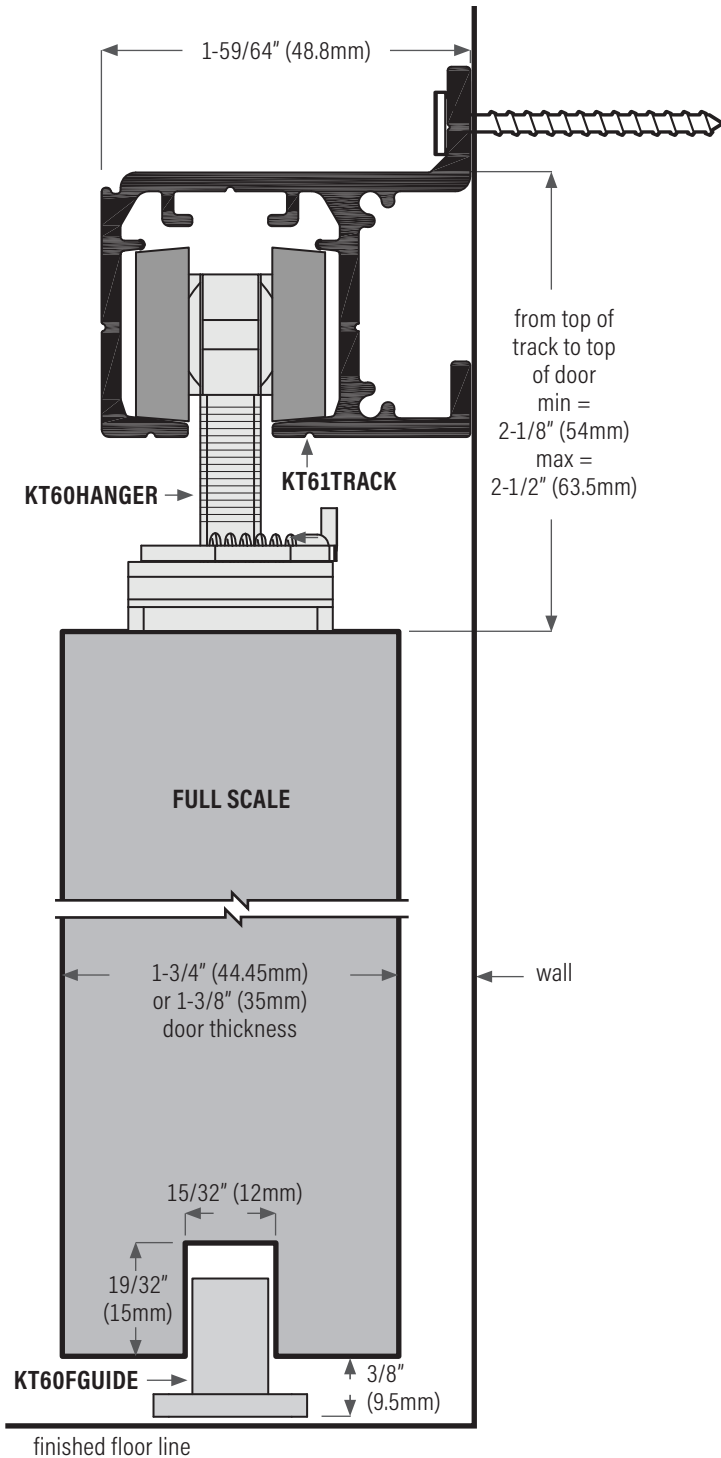


KT61 Commercial Series: Single Track For Sliding Doors, Wall Mount

MAXIMUM CAPACITY:	Width and height of the door may vary beyond standard sizes, provided the weight of the door does not exceed the maximum hanger weight listed. Weight check on door panel should always be performed by either manually weighing the door or checking manufacturing specs.
VERTICAL ADJUSTMENT:	3/8" (9.5mm)
TRACK:	Extruded aluminum, clear anodized.
HANGER:	Steel plated or cast carrier, 4 nylon wheels, ball bearing, QUICK RELEASE FEATURE.
OPTIONS:	KT6FC Fascia, extruded aluminum, clear anodized (standard) or custom colour, 4 lengths available available: 84" (2133mm), 96" (2438mm), 120" (3048mm) & 160" (4064mm). KT23 floor channel extruded aluminum, bronze anodized with PVC insert. Also available KT20 & KT19 floor channels.



KIT INCLUDES

KT60HANGER
Quick release hanger (x2)

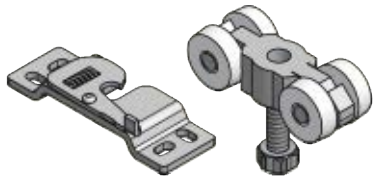
Intrack stop (x2)

Floor guide (x2)

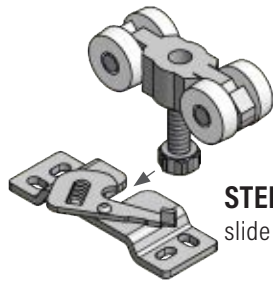
Wrench (x1)

KT61 Commercial Series: Single Track For Sliding Doors, Wall Mount

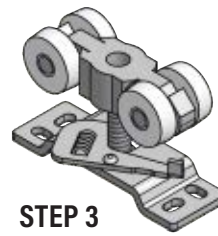
Quick release feature allows for fast and safe installation and adjustment of door. Hanger bolt snaps into bracket and holds while you're making adjustments



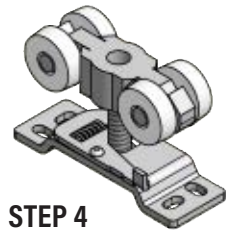
STEP 1
hanger and bracket before assembly



STEP 2
slide lever open



STEP 3
slide bolt into slot



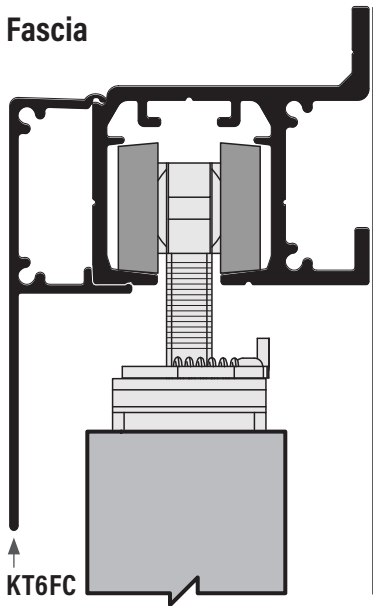
STEP 4
release lever to lock in place

KT60KIT for 1 door application:

KT60HANGER (2 ea) quick release hangers, KT60FGUIDE (1 ea) floor guide, KT60STOP (2 ea) intrack stops, (1 ea) wrench, installation sheet plus all screws.

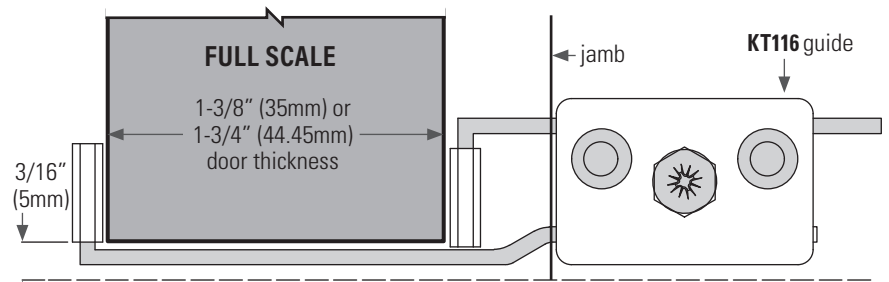
Max door weight: 132 lbs. (60 kg) = 2 hangers

Fascia



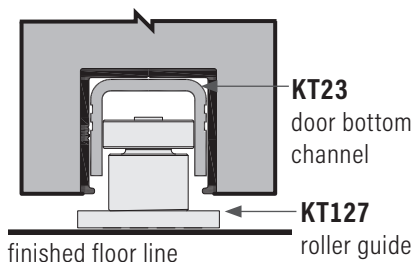
KT6FC
fascia
optional

Jamb Mounted Guide for Wall Mounted Sliding Doors



KT116 Adjustable bottom guide (metal & plastic), for doors up to 1-3/4\"/>

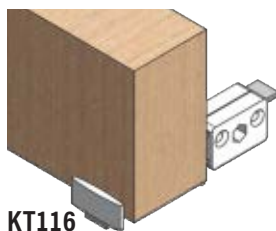
OPTIONS



KT23
door bottom
channel

KT127
roller guide

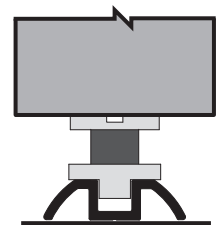
finished floor line



KT116
Adjustable bottom guide
(metal & plastic) for
wall mounted 1-3/4\"/>

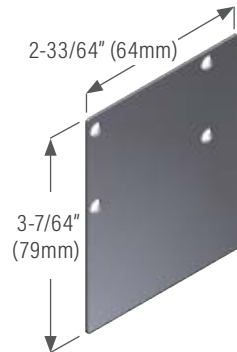
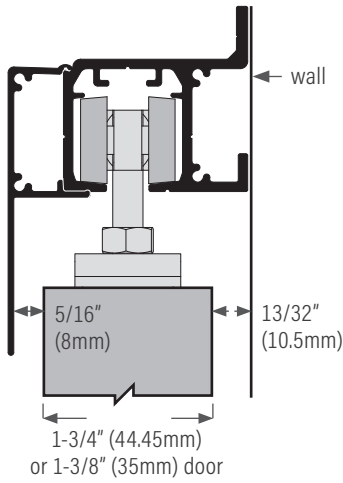


KT102 Floor guide (plastic)

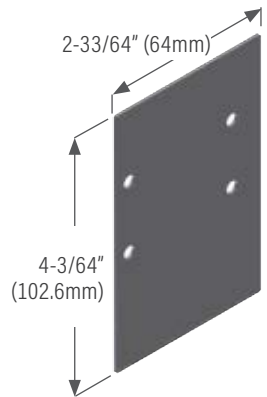
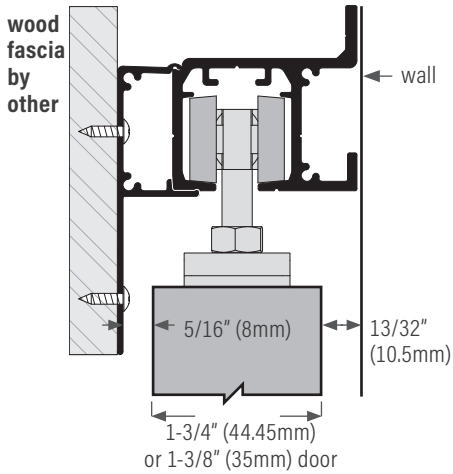
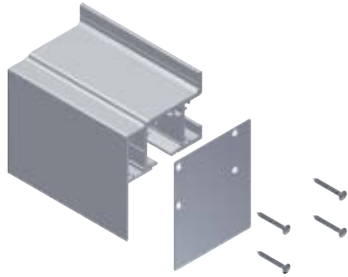


KT114 Bottom guide
(plastic), spring
loaded, for KT19 floor
channel

KT6FC Fascia for KT61 Wall Mount Track (end caps must be installed)



KT61ECSINGLE
End cap, satin finish, for single fascia application. Fits KT61TRACK with fascia



KT61ECSINGLEWOOD
End cap, satin finish, for single fascia application. Fits KT61TRACK with wood fascia over aluminum fascia

