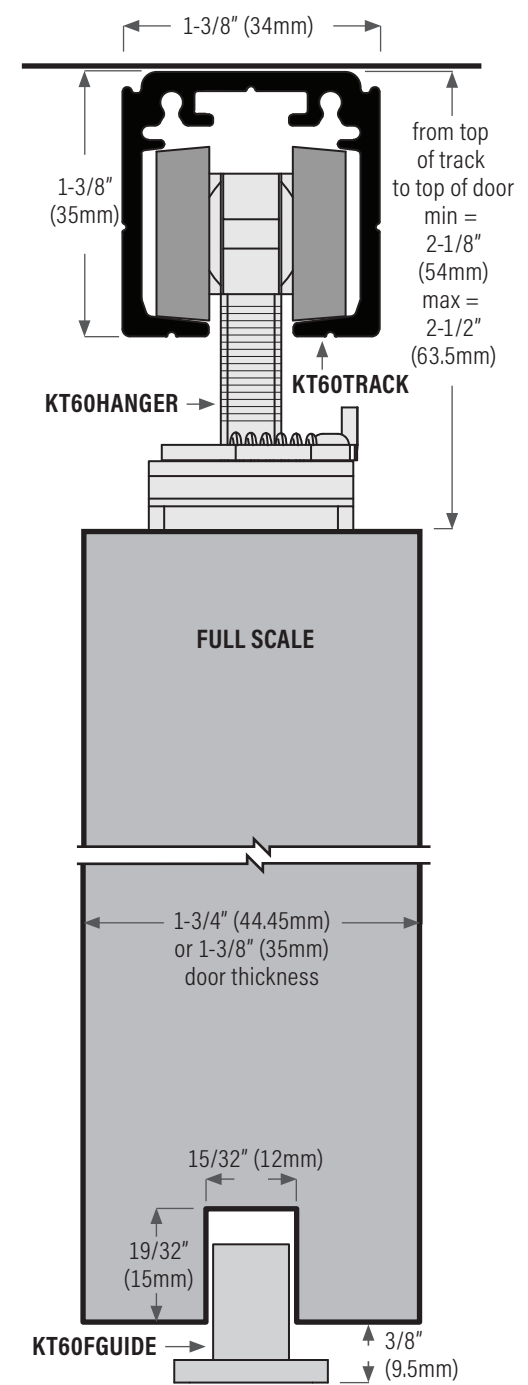
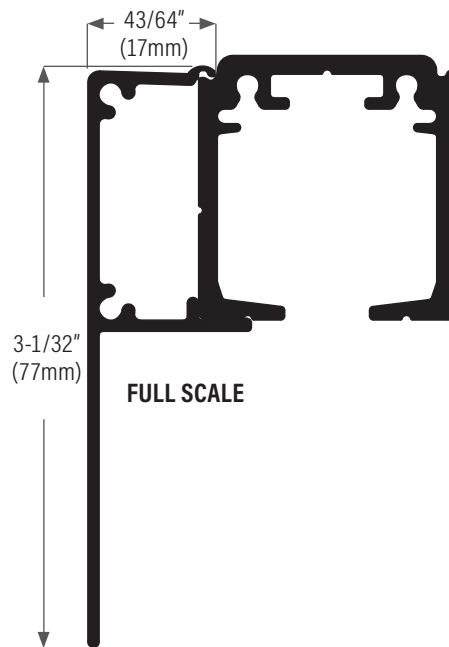


KT60 Commercial Series: Single Track For Sliding Doors, Ceiling Mount

MAXIMUM CAPACITY:	Width and height of the door may vary beyond standard sizes, provided the weight of the door does not exceed the maximum hanger weight listed. Weight check on door panel should always be performed by either manually weighing the door or checking manufacturing specs.
VERTICAL ADJUSTMENT:	3/8" (9.5mm)
TRACK:	Extruded aluminum, clear anodized.
HANGER:	Steel plated or cast carrier, 4 nylon wheels, ball bearing, QUICK RELEASE FEATURE.
OPTIONS:	KT6FC fascia, extruded aluminum, clear anodized (standard) or custom colour, 4 lengths available: 84" (2133mm), 96" (2438mm), 120" (3048mm) & 160" (4064mm). KT23 floor channel extruded aluminum, bronze anodized with PVC insert. Also available KT20 & KT19 floor channels.

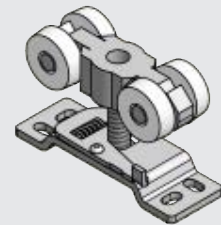


SINGLE TRACK WITH OPTIONAL FASCIA



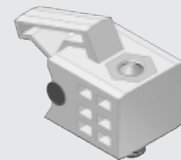
KT6FC Fascia aluminum clear anodized. Lengths available 84" (2133mm), 96" (2438mm), 120" (3048mm) & 160" (4064mm)

KIT INCLUDES



KT60HANGER

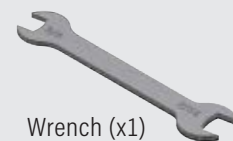
Quick release hanger (x2)



Intrack stop (x2)



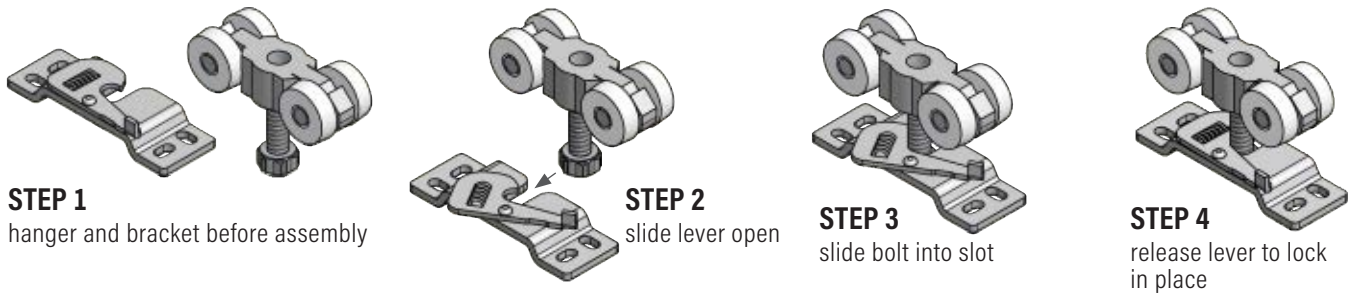
Floor guide (x2)



Wrench (x1)

KT60 Commercial Series: Single Track For Sliding Doors, Ceiling Mount

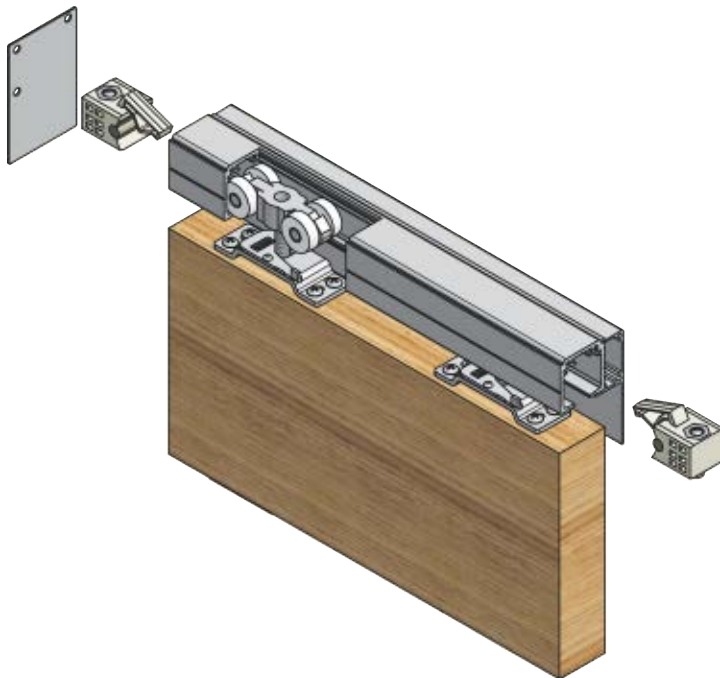
QUICK RELEASE feature allows for fast and safe installation and adjustment of door. Hanger bolt snaps into bracket and holds while you're making adjustments



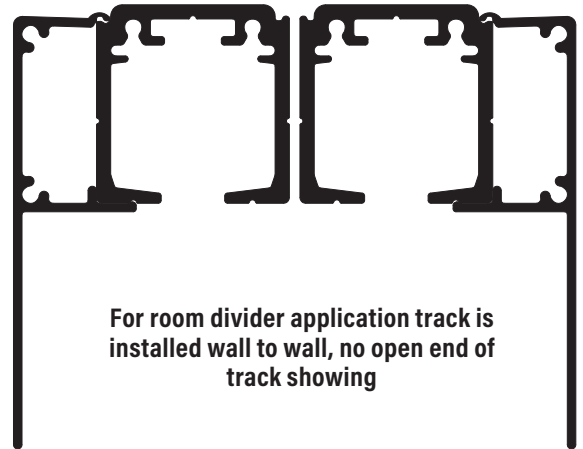
KT60KIT for 1 door application:

KT60HANGER (2 ea) quick release hangers, KT60FGUIDE (1 ea) floor guide, KT60STOP (2 ea) intrack stops, (1 ea) wrench, installation sheet plus all screws.

Max door weight: 132 lbs. (60 kg) = 2 hangers

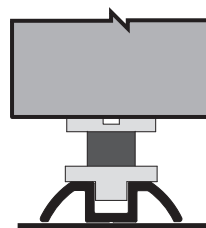
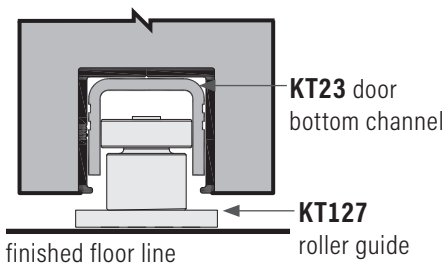


2X SINGLE TRACK FOR BYPASS APPLICATION. FASCIAS BOTH SIDES FOR ROOM DIVIDER APPLICATION.

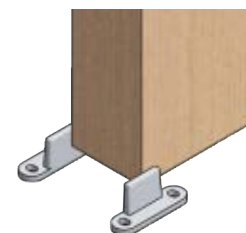


KT6FC Fascia aluminum clear anodized

Bottom Guiding Options

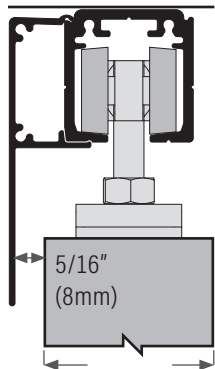


KT114 Bottom guide (plastic), spring loaded, for KT19 floor channel

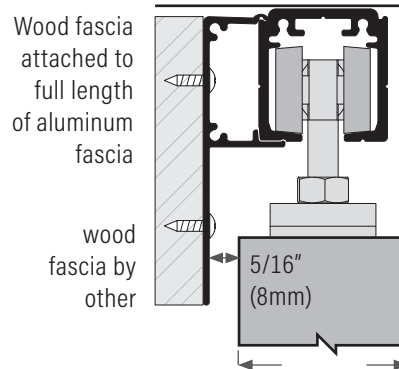


KT102 Floor guide (plastic)

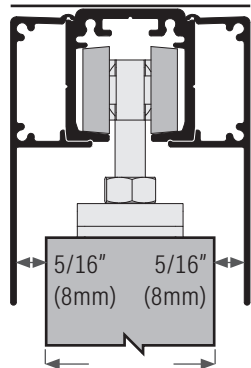
KT6FC Fascia for KT60 Ceiling Mount Track



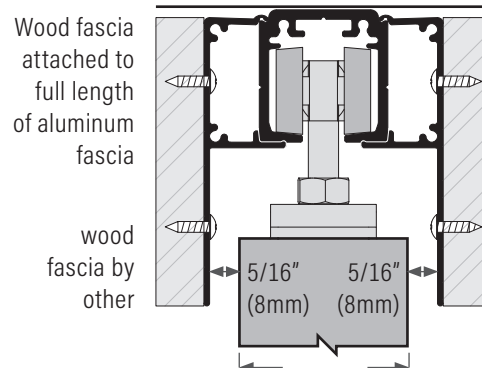
1-3/4" (44.45mm) or
1-3/8" (35mm) door thickness



1-3/4" (44.45mm) or
1-3/8" (35mm) door thickness

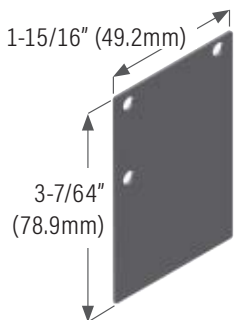


1-3/4" (44.45mm) or
1-3/8" (35mm) door thickness

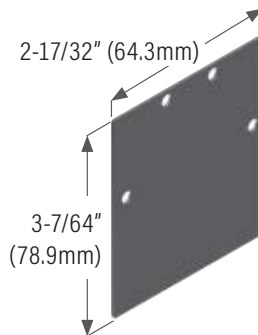


1-3/4" (44.45mm) or
1-3/8" (35mm) door thickness

END CAP SELECTION



KT60ECSINGLE
End cap, satin finish, for single fascia application. Fits KT60TRACK with fascia one side



KT60ECDOUBLE
End cap, satin finish, for double fascia application. Fits KT60TRACK with one fascia each side

Depending on application, if the track is open at either end, then intrack stop must be fastened to either one or both ends of track.